

Argos DataBlock Designer Training

Security and Schedule & Delivery

Object Security

Definitions

Objects	Folders	
	DataBlocks	
	Reports	

Permissions	Full	Perform any action, including modifying permissions for any user, including themselves.
	Change Permission	Modify permissions for any user, including themselves.
	Execute	Run the selected object.
	Modify	Modify and Run the selected object.
	View/List Children	View the object and the children of the object.
	Create/Modify Children	Create or Modify child objects of the selected object.

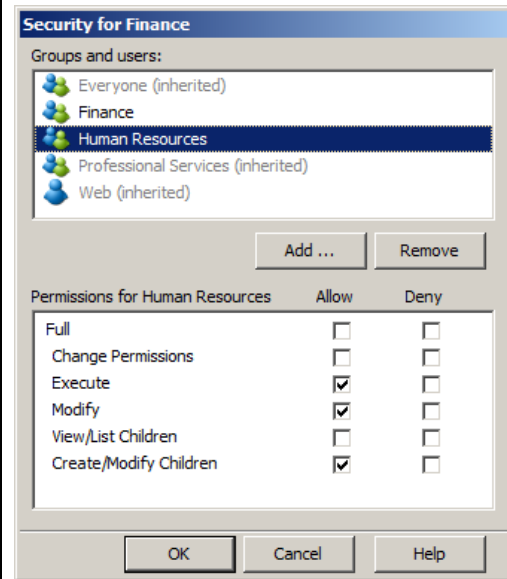
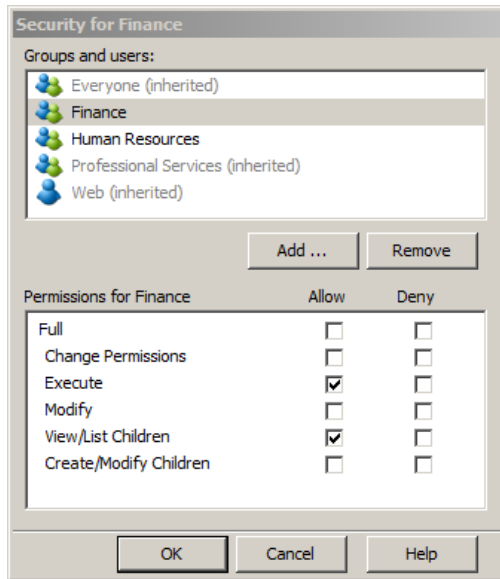
Who Can Manage	Administrators	Administrators can not be locked out of an object.
	DataBlock Designers	Who have "Change Permission."

Security Privileges	Direct Security	Security explicitly defined on an individual user supersedes any permissions they may have due to membership in one or more groups.
	Inherited Security	All objects underneath an object will have the same permissions unless explicitly overridden.
	Accumulated Group Permissions	A user's effective permissions are a sum of all the permissions for the groups to which that user belongs.
	Everyone Group	All users are automatically part of the Everyone group.

NOTES

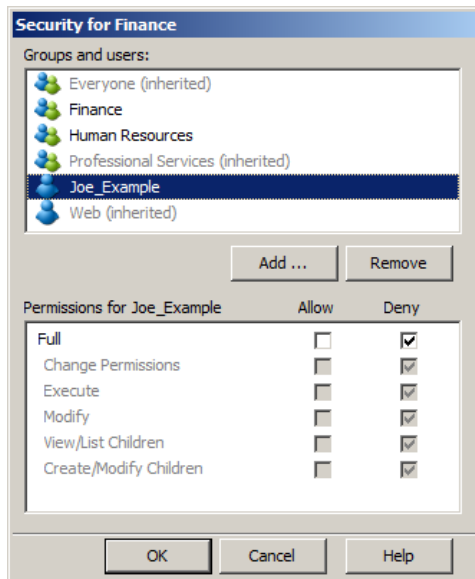
Object Security Exercises

Exercise 1



1. Joe Example is a member of both the Finance and HR groups. What are his effective permissions for the Finance folder? _____
2. Joe is a DataBlock Designer. Can he change permissions on any of the objects in the Finance folder? _____

Exercise 2



3. Joe's account was added to the security permissions for the Finance folder. Can he access the folder? _____

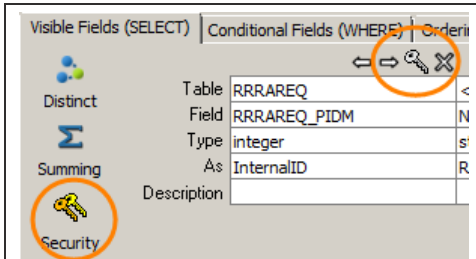
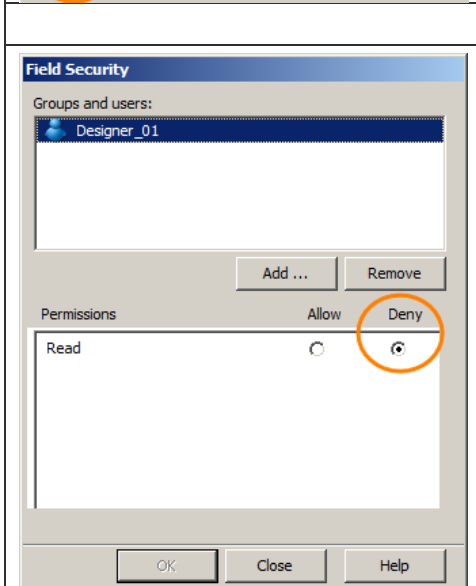


Exercise 3

4. Modify the security on your own training folder to lock out everybody except yourself.

Report Query Field Level Security

Restrict access to the data in a field by using security.

- Benefits:
 - Applying field level security allows Report Writers to use the field in their report designs without being able to see the data.
 - Use one report for multiple users.

	<p>Use the key to manage individual field security.</p> <p>Use the double keys to manage security for all fields.</p>
	<p>Deny read permission to a user or a group.</p> <p> Remember that DataBlock Designers with edit permission on the DataBlock can modify field level security permissions.</p> <p> You can not lock out the Administrator!</p>

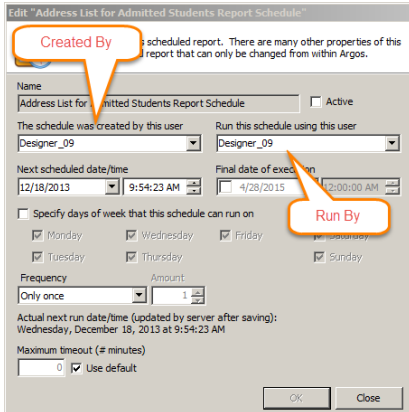
NOTES

Schedule and Delivery

Best Practices

NOTES

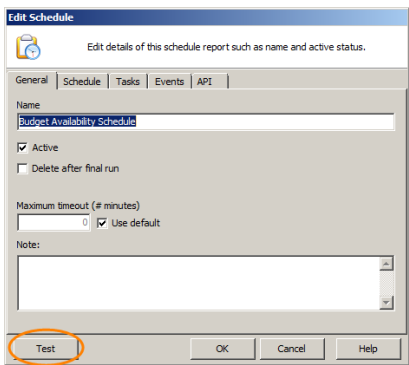
Create a generic Argos user account to use as the Run By user for scheduling.




The schedule creator does not have the option to change the Run By user but the MAPS Administrator can change the user in the MAPS Configuration Tool.

Using a generic Run By user reduces the impact of employee turnover on scheduling.

Test the schedule step by step. If Send an Email is configured clicking the Test button will send all the emails.



 Testing the schedule executes the entire task list and does not run the test in a closed environment. Testing will execute each step in the task list in production. If Send an Email is configured to send emails to students clicking the Test button will execute that task and send emails to students.

Bursting and Emailing

A schedule that bursts on a common unique identifier and emails the bursted report.

Added tasks

- Execute the report
 - Bursting
 - Process and save
 - Send an Email



Make sure the tasks underneath Bursting are indented. The indent indicates that these tasks are looping.

When you move the execution order of the email task up and down it can sometimes lose the pointer to the attachment. Confirm that the attachment is defined in the properties.

Add the Process and save and copy tasks to create a copy of the entire report that can be saved.

Added tasks

- Execute the report
 - Bursting
 - Send an Email
 - Process and save
 - Process and save
 - Copy file

NOTES